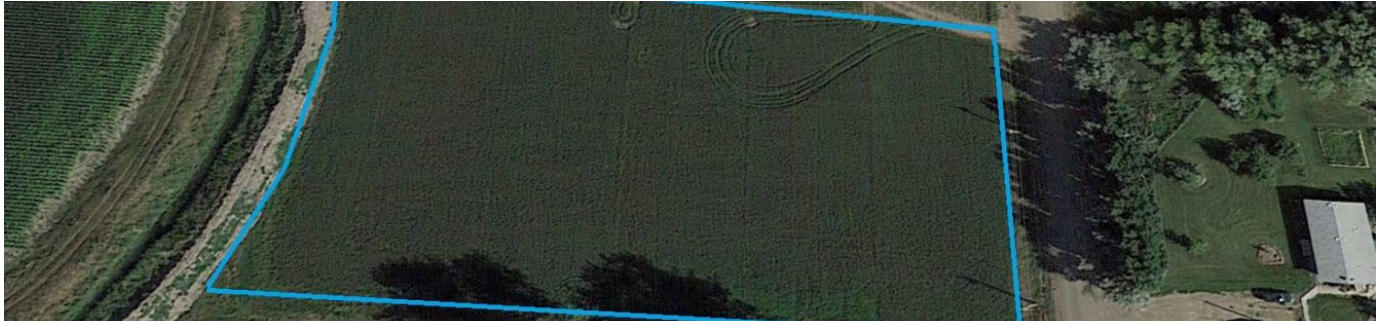


Nick Jones Real Estate

12911 County Road 353

on 2.46 acres in Richland county MT for \$100,000.00

\$100,000



2.46 acres

0 sqft

Single Family Residential Lot! 2.46 Acres Only 4 Miles from Sidney, Mt -Protective Covenants.



Status: Active
Type: Residential
Location: In Richland county near Sidney, MT
County: Richland
Listing office Nick Jones Real Estate

Nick Jones Real Estate
310 14th Street SE
Sidney, Montana

Contact **Nick Jones Real Estate**

(406) 433-4445

February 25th 2024: <https://nickjonesre.com/node/198>